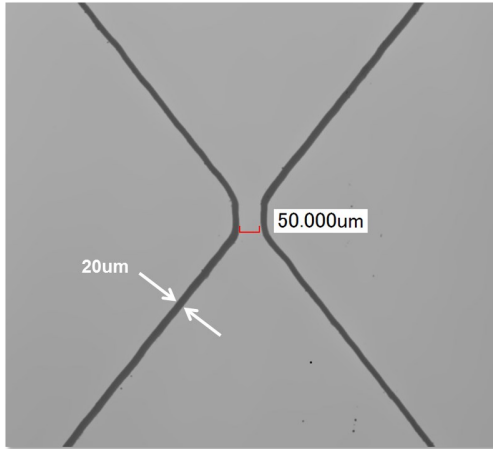
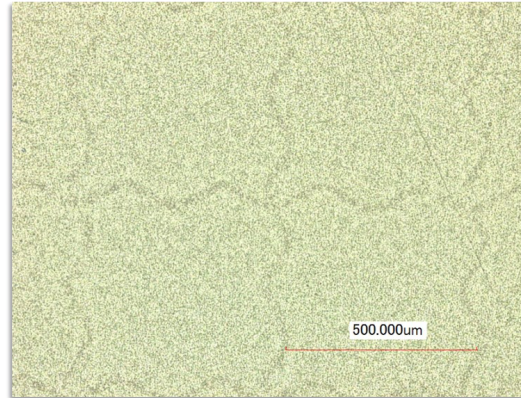


Parameter	Performance Range
Cost per sensor patterning	as low as 20% of photolith
Capacity, sensors per month	14": up to 400,000 27": up to 100,000
Transparency	Best-in-class
Incremental Haze and Color Coordinate	Near-zero
TC isolation line width	25um to 50um standard, <10um in development
Silver paste line width	<30um standard, <10um in development
Pattern accuracy	<5um
Established TC material processes	Sheet Resistance: 50 – 200 Ohm/sq
Maximum patterning area	Up to 1 meter by 2 meter
ProTect™	Patterning through protective film
nSpec™	Auto-scale to PET shrinkage
Material handling	S2S, R2S, R2R

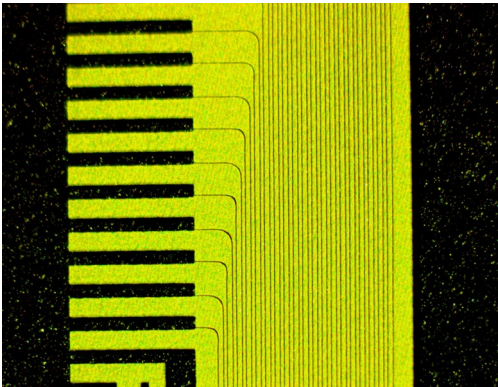
### Laser patterning enabling your competitive advantage



ITO on Glass or PET

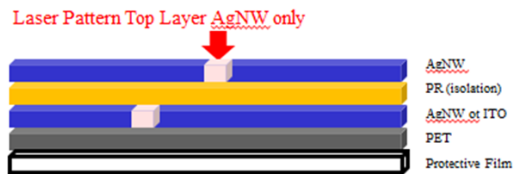


AgNW on Glass or PET



Silver Paste on Glass or PET

- <30um scribe standard
- <10um scribe in development



One-Film in Development: